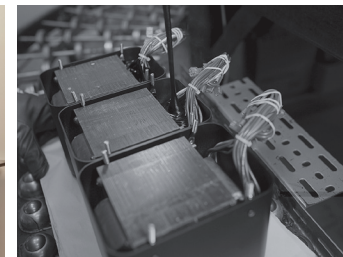


MT2 precision turntable

- The McIntosh MT2 Precision Turntable combines the latest in turntable technology and design to deliver both superb performance and accurate playback.
- Its advanced electronic and mechanical design will give you many years of smooth, trouble-free operation.
- Virtually ready to use out of the box as tracking force, anti-skate force, cartridge overhang and arm height are all preset from the factory for maximum performance. The remaining setup steps are simple and you'll be enjoying your vinyl in no time.
- The DC motor is driven by an external voltage-stabilized power supply and is completely decoupled from the chassis, isolating your records from any mechanical interference.
- Sturdy plinth has a resonance optimized and highly compressed wood base with black lacquer finish, while the top and middle acrylic plates help absorb unwanted vibrations.
- A subtle green glow emanates from under the platter and the outside edges of the plinth for a touch of refined ambiance.



Superb Performance and Accurate Playback

McIntosh®

LEGENDARY PERFORMANCE™

www.mcintoshlabs.com

